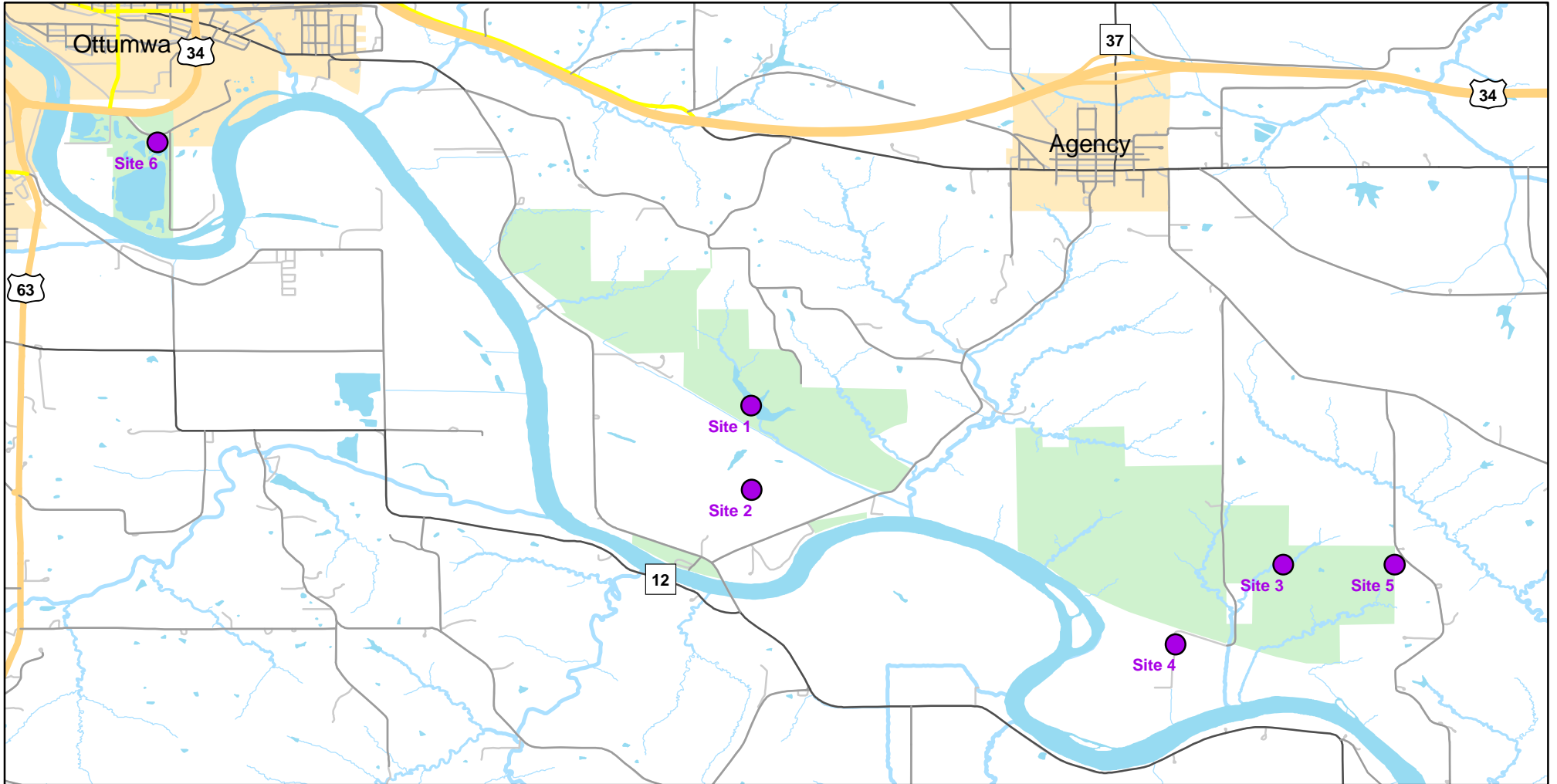




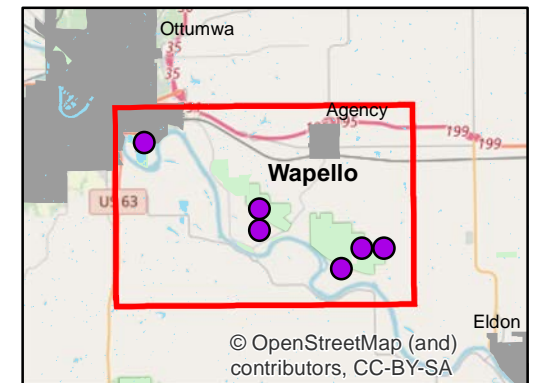
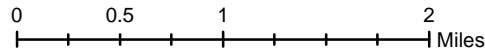
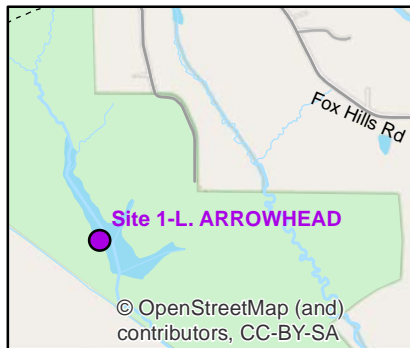
# Volunteer Wildlife Monitoring Program (VWMP) Frog

Route ID: 42 County: Wapello

Click for Google Maps to Site 1: <https://www.google.com/maps/dir/?api=1&destination=40.9734657405,-92.3380084579>



Enlarged View of Site 1

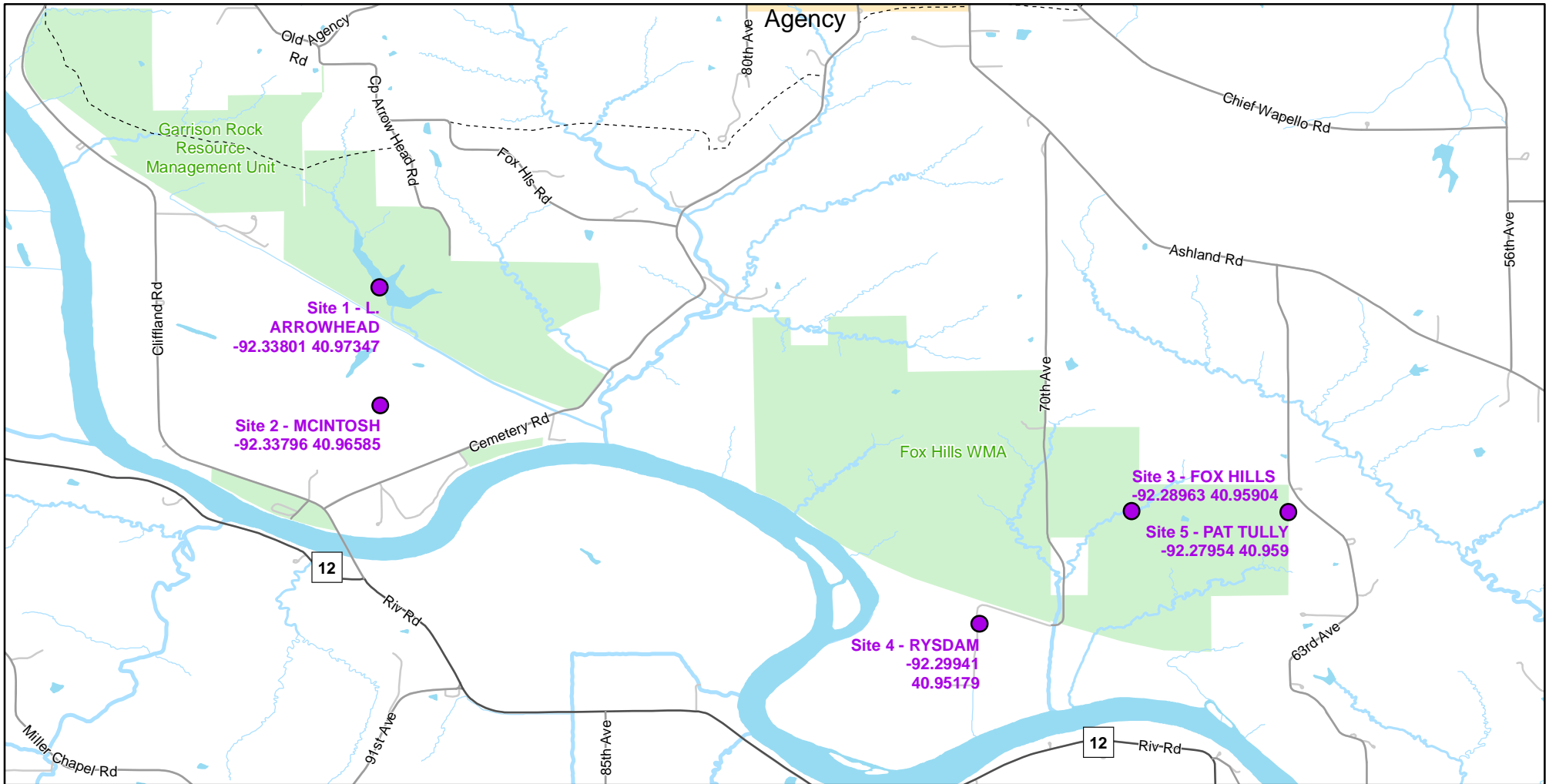




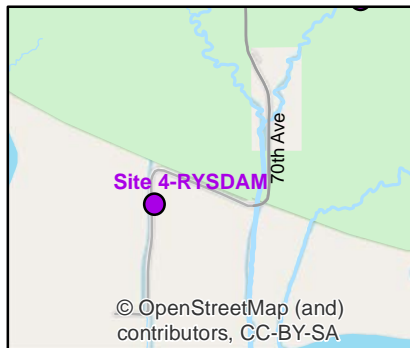
# Volunteer Wildlife Monitoring Program (VWMP) Frog

Route ID: 42 County: Wapello

Click for Google Maps to Site 1: <https://www.google.com/maps/dir/?api=1&destination=40.9734657405,-92.3380084579>

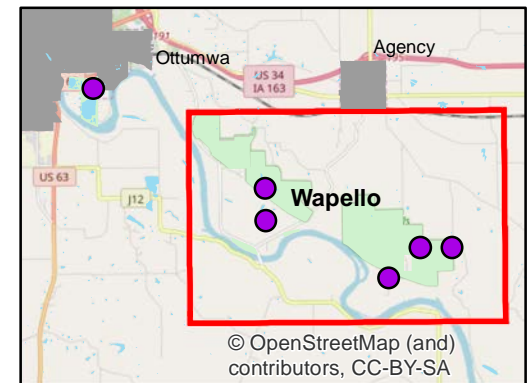


Enlarged View of Site 4



## Legend

----- Trails

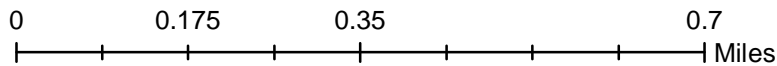




# Volunteer Wildlife Monitoring Program (VWMP) Frog and Toad Survey

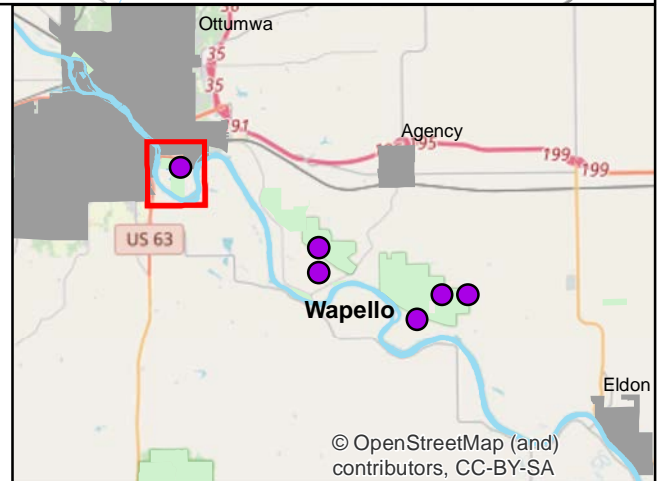
Route ID: 42 County: Wapello

Click for Google Maps to Site 1: <https://www.google.com/maps/dir/?api=1&destination=40.9734657405,-92.3380084579>



## Legend

----- Trails



© OpenStreetMap (and) contributors, CC-BY-SA



# Frog and Toad Call Survey Route Description

Route ID **42**

Established: 1991

Site Number	Name	County	Latitude	Longitude	Directions
1	L. ARROWHEAD	Wapello	40.9734657	-92.3380085	
2	MCINTOSH	Wapello	40.9658513	-92.3379568	
3	FOX HILLS	Wapello	40.9590417	-92.2896257	
4	RYSDAM	Wapello	40.9517936	-92.2994107	
5	PAT TULLY	Wapello	40.9589971	-92.2795376	
6	Gray Eagle	Wapello	40.9974231	-92.3919864	200 yards south of Hwy 34 between 2 river access roads.